



**28 Drapers Rise, Sweetlake Meadow, Shrewsbury SY3 9FN**

2 bedroom ground floor apartment—Offers In The Region Of £225,000 Share Of Freehold



## 28 Drapers Rise, Sweetlake Meadow, SY3 9FN

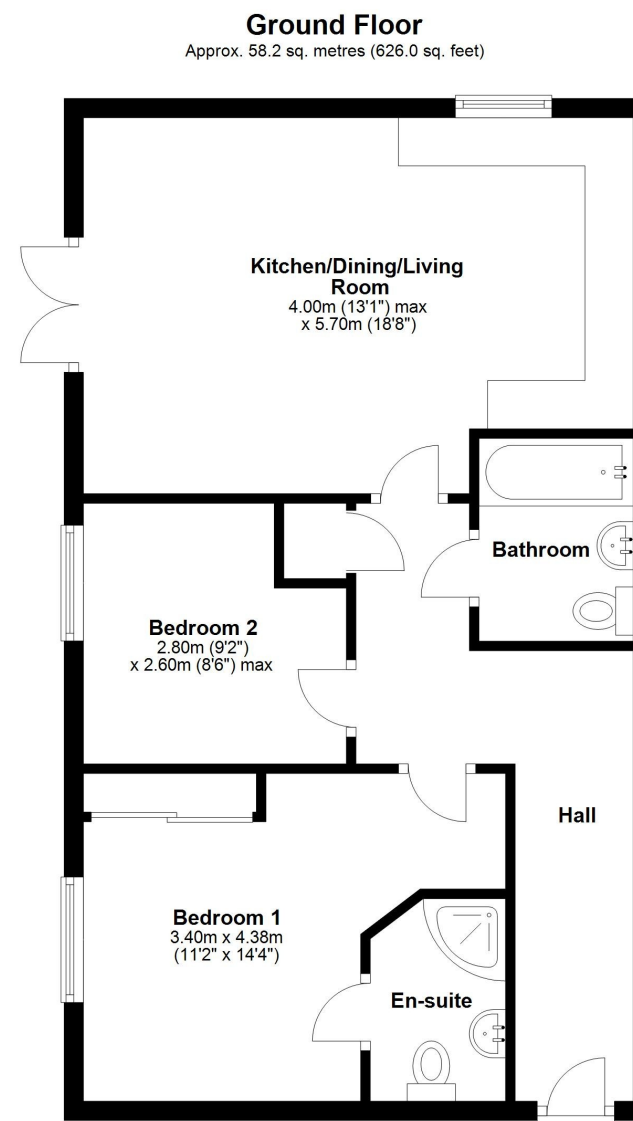
Coopergreenpooks.co.uk

Offers In The Region Of £225,000— Share Of Freehold—2 bedroom ground floor apartment  
sales@cgpooks.co.uk

This beautifully presented ground floor apartment offers thoughtfully designed and practical accommodation, finished to a high standard throughout, while benefiting from an attractive private rear garden and parking for two cars.

### KEY FEATURES

- Neatly kept communal entrance hall with telephone entry system
- Good sized inner hallway with useful storage
- Fantastic open plan kitchen/living/dining room with glazed doors onto the garden
- A range of well-fitted units to the kitchen, complete with integrated appliances
- Master bedroom with built in wardrobes and en-suite shower room
- A further bedroom and separate family bathroom
- uPVC double glazed windows and gas fired central heating
- Private landscaped rear garden, laid to lawn with paved sun terrace, raised beds and secure gated access to the communal bike/bin store and parking areas
- A great location, tucked away at the end of a quiet cul-de-sac within a popular modern development on the fringe of the town, just a stone's throw from lovely countryside walks, while being just a short distance from a choice of primary and secondary schools, and less than two miles from the town centre
- Built by reputable local developers, SJ Robers, and still covered by the 10 year new build guarantee
- Sold with no upward chain
- Sold with a Share of Freehold



Total area: approx. 58.2 sq. metres (626.0 sq. feet)

We accept no responsibility for any mistake or inaccuracy contained within the floorplan. The floorplan is provided as a guide only and should be taken as an illustration only. The measurements, contents and positioning are approximations only and provided as a guidance tool and not an exact replication of the property.  
Plan produced using PlanUp.







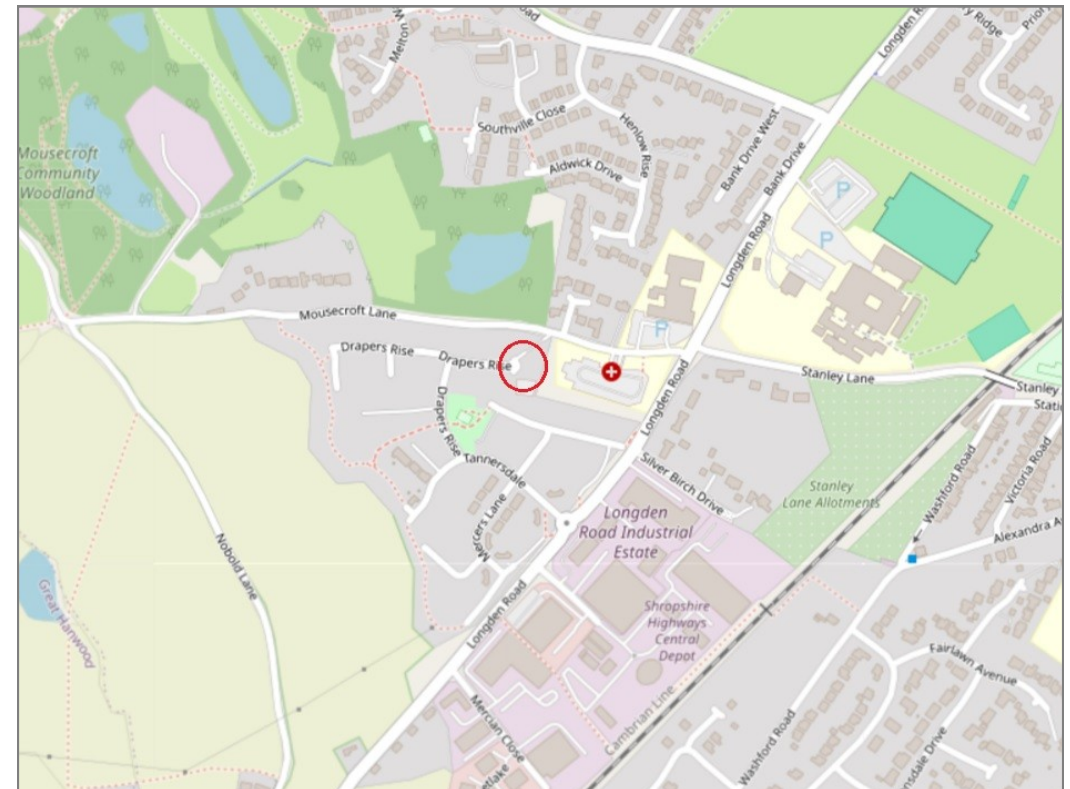






## 28 Drapers Rise, Sweetlake Meadow, SY3 9FN

Offers In The Region Of £225,000— Share Of Freehold—2 bedroom ground floor apartment  
sales@cgpooks.co.uk



**BOUNDARIES NOT CONFIRMED**

Tenure	Share Of Freehold
Local Authority	Shropshire Council
Council Tax	Band A
EPC Band	Band B
Services	All mains services are connected

**Expert mortgage advice available**  
3 Barker St, Shrewsbury SY1 1QF  
**Cooper Green Pooks**  
**01743 276666**



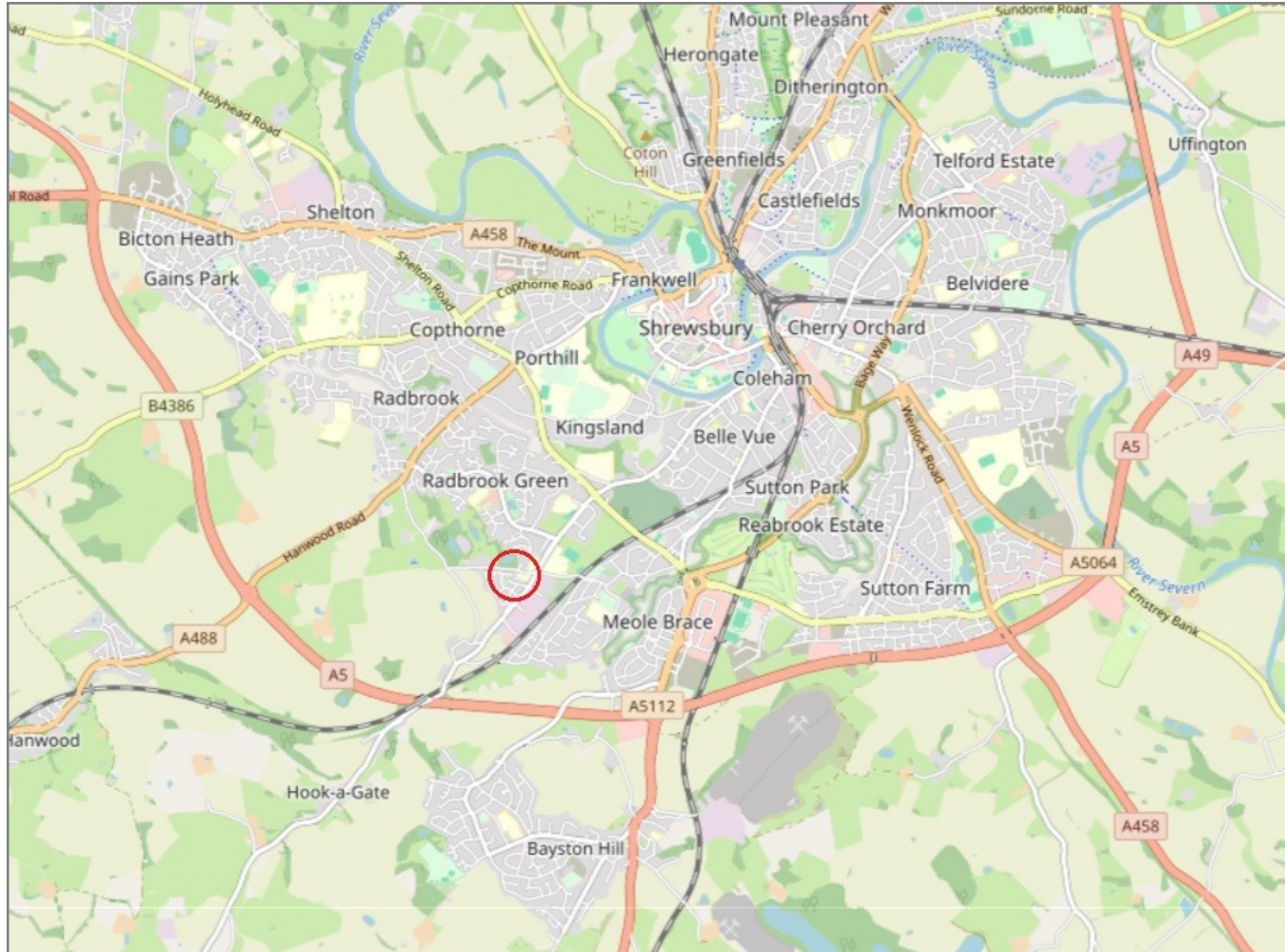
Your home may be repossessed if you do not keep up repayments on your mortgage.  
There may be a fee for mortgage advice. The actual amount you pay will depend upon your circumstances. The fee is up to 1% but a typical fee is 0.3% of the amount borrowed.

## 28 Drapers Rise, Sweetlake Meadow, SY3 9FN

Coopergreenpooks.co.uk

Offers In The Region Of £225,000— Share Of Freehold—2 bedroom ground floor apartment

sales@cgpooks.co.uk



**IMPORTANT NOTICE:** Cooper Green Pooks for themselves and for the lessors or vendors of this property whose agents they are give notice that: 1 No appliances, services or service installations have been tested and no warranty as to suitability or serviceability is implied. Any prospective purchaser or lessee is advised to obtain verification from their surveyor or solicitor. 2. The particulars are set out as a general outline only for the guidance of the intended purchasers or lessees and do not constitute, nor constitute part of, an offer or contract. 3. All descriptions, reference to condition and necessary permissions for use and occupation and other details are given in good faith and are believed to be correct but any intending purchasers or lessees should not rely on them as statements or representation of fact but satisfy themselves by inspection or otherwise as to the correctness of each of them. 4. No person in the employment of Cooper Green Pooks has any authority to make or give any representation or warranty whatsoever in relation to this property. 5. All rentals and prices are quoted exclusive of Stamp Duty, legal and surveyors fees and any other associated purchasers or lessees costs. 6. Floor plans are indicative only and should not be relied on. 7. The plan showing the boundary of the property is indicative only and has not been checked against the legal title so should not be relied on. 8. All dimensions, floor areas and site areas are only approximate and should not be relied on. Dimensions are generally maximum room dimension.